

TITLE: Van Gogh at the Bluff: Pastel Drawing of “A Rock pool Ramble” as an Impressionist

SUBJECT: This activity explores the basic techniques of drawing as an Impressionist artist such as Van Gogh using the different rules that need to be followed to produce an Impressionist artwork.

OBJECTIVE:

To be aware of how living things co-exist in a rock pool and what plants and creatures are found there?

To understand Impressionism and the rules when imitating it.

- Colours that are used. The only colors that can be included in a true Impressionist painting are dominant shades of complimentary colors (or colors completely opposite of each other on the color wheel) and white for lightening.
- Students need to follow a very specific painting style. This would be to use dots, dabs, to make the objects in the painting. This is done exactly how it sounds--instead of painting an object with lines, they need to make it out of dots, dabs, with the soft pastels.



Concepts: Students will demonstrate Impressionism styles by:

1. Showing dominant shades of complimentary colors.

MATERIALS:

Examples of Impressionists artwork by such painters as Van Gough

Pastel paper - strong bright colors.

Packets of soft Pastels

HB pencils

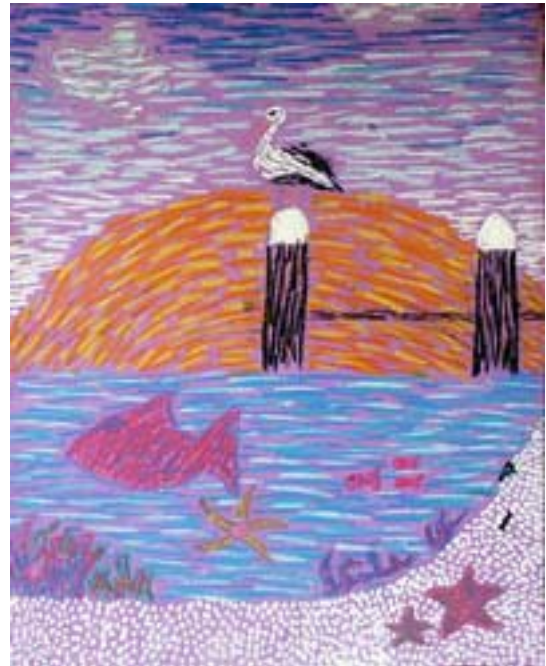
REFERENCE: Museums Index at World Wide Arts Resources

<http://wwar.com/museums.html>

Time Required: 2 1/2hrs. To 3 weeks

PROCEDURE:

- Plan your idea. Create at least three thumbnail sketches of ideas. Choose the best one and create a rough draft that is the same size as the linoleum.
- Make a photocopy of the rough draft and plan the colors; decide on 4 to 5 colors to use in the print. (One color will be the color of the paper and the others will be black ink. Then colored in partly with colored water colors/ gouache paint}. Make a color rough draft.
- Transfer the drawing from the rough draft to the linoleum with carbon paper and then trace the lines again on the linoleum with a Texta. (Carbon lines will wear off before the project is complete)
- Fill in the area to be cut (the color of the paper) with texta to insure mistakes are not made in the cutting.
- Carve away this area, being careful to always cut away from your body and hand. (Heating the linoleum with a blower heater makes the cutting much easier and safer.)
- Ink the linoleum with a dark water based ink color.
- Lay the inked linoleum on the paper and trace around the edges to register the print.
- Flip the linoleum over and apply pressure to the paper to transfer the ink. Lift the corners of the paper away from the linoleum to check the print. Add more ink if needed and continue pressing until you are satisfied with the transfer
- Clean the linoleum after the printing is complete and allow it to dry.
- Sign, title, and edition number the prints.



These prints can be used as front covers for a variety of promotional products. Such as greeting cards, that encourages people to enjoy as well as protect their coastal environment.